

baseus
SECURITY

QUICK START GUIDE

Baseus Security N1

Outdoor Camera 2K 2-Cam Kit



1.Package Including

Baseus Security H1 HomeStation

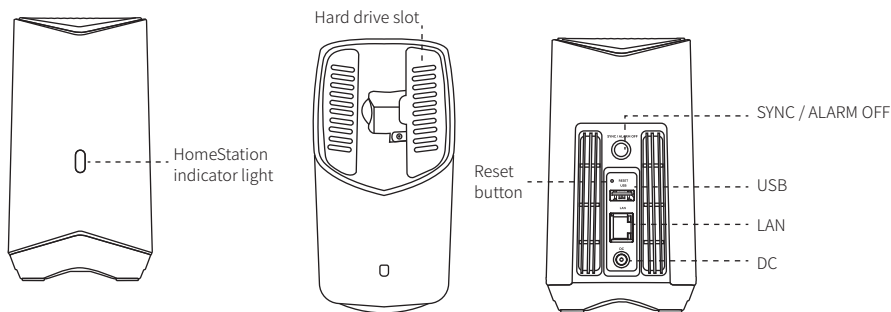
H1 HomeStation×1(Model: S1UA00)
Power Adapter x 1
100Mbps Ethernet Cable x 1
Screw Pack x 1

Baseus Security N1 Outdoor Camera

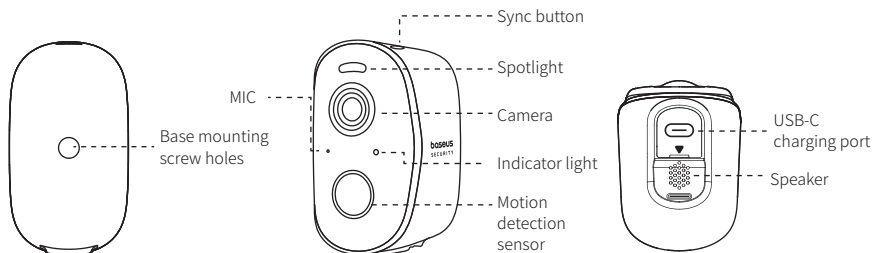
N1 Camera×2 (Model: S0ST00)
Camera Charging Cable x 1 (USB-A to USB-C)
Screw Mount x 2

2.Product Overview

① H1 HomeStation

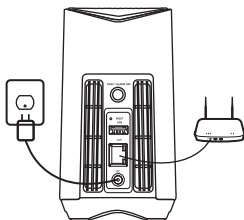


② N1 Camera

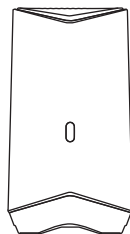


3.Setup Instructions

① Connect the HomeStation



Connect the included power adapter to the H1 HomeStation and turn it on. Use the included Ethernet cable to connect the H1 HomeStation to your router.



When the indicator light lights blue, the H1 HomeStation is ready for setup, which takes about 1 minute.

② Download the App for Synchronization

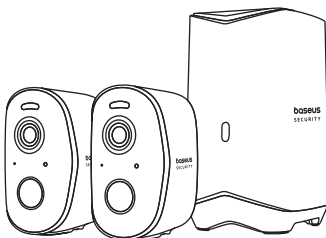


Google Play and the Google Play logo are trademarks of Google Inc.



Apple and the Apple logo are trademarks of Apple Inc.

Download and install the baseus Security APP, and register an account. Follow the onscreen instructions to complete the setup. The Home Station indicator light will stay on blue when pairing is successful.

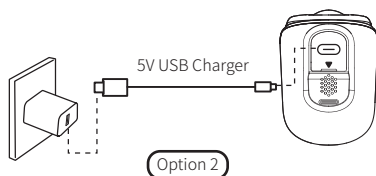
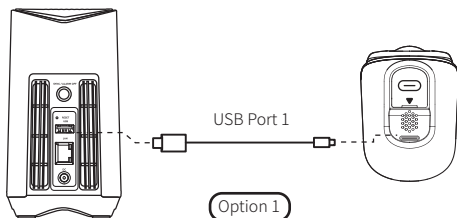


4.Camera Charging

! Please fully charge both cameras before first use. It takes about 5 hours to charge each camera.

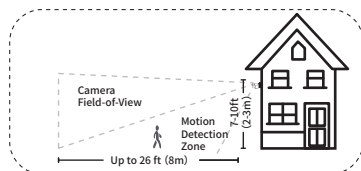
Charging Indication

Indicator Light	Charging : Flash blue
	Fully charged: Off
Charging Time	5 hours

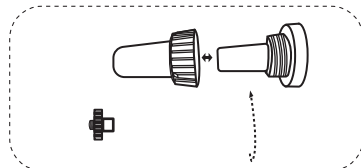


5.Camera Installation

① Choose a location where you can get the ideal viewing angle. It is suggested to mount the camera 7-10 feet (2-3 meters) above the ground.

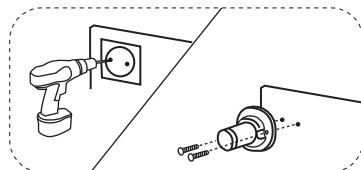


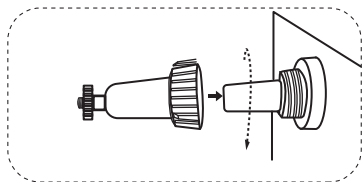
② Turn the knob of the mounting bracket counterclockwise to loosen and remove it.



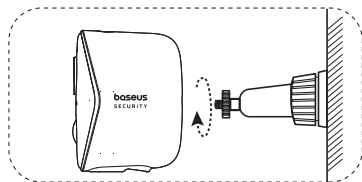
③ Drill holes with a 15/64-inch (6 mm) drill bit and insert expansion bolts into the holes;

Expansion bolts are necessary for walls made of hard materials such as concrete, brick, or stucco.





④ Screw the knob of the mounting bracket firmly into the mounting hole.



⑤ Tighten the camera to the mounting bracket and adjust the viewing angle by checking the live stream feed in the baseus Security app.

! For troubleshooting, turn to the Service Center module in the baseus Security App for help.

6.Expanding Hard Drive(Optional)

The H1 HomeStation includes 16GB of built-in storage, which can be expanded with an external hard drive. Follow these steps to set it up:

a. Prepare your hard drive

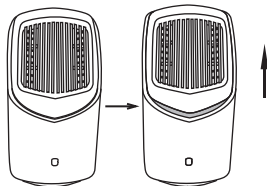
Your hard drive must meet the following requirements:

Type	Mechanical hard drive (HDD) or solid state drive (SSD) with SATA interface.
Size	2.5 inches
Capacity	16TB(Max.)
Recommending Brands	Western Digital, Seagate, SAMSUNG, Kingston, PNY, Crucial, SanDisk.

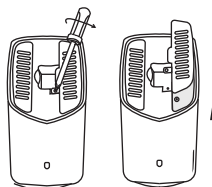
! Before adding a hard drive to the H1 Homestation, please transfer all data on the hard drive to a safe location.

b. Install your hard drive

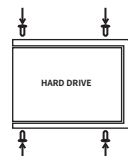
! The H1 HomeStation must be turned off when you install or remove the hard drive.



① Remove the Homestation top cover.



② Loosen the screws and pull out the hard drive enclosure.

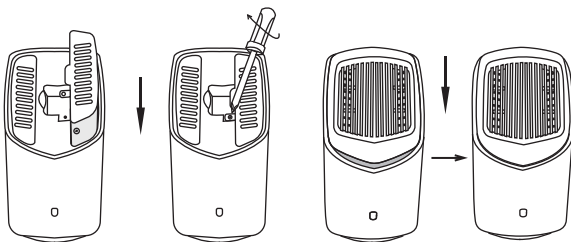


③ Use the included screws to secure the new hard drive to the enclosure.

④ Insert the enclosure back into the H1 HomeStation and tighten the screws, then put the top cover back in place.

! You can expand your storage room after cutting off power to the HomeStation by following the steps above.

The new hard drive must be initialized through the Baseus Security APP for use with the H1 HomeStation.



7. Product Specifications

H1 HomeStation	Input Power	12V~2A (Max.)
	USB-A Output	5V~2A (Max.)
	Ethernet Port	100Mbps (Max.)

N1 Camera	Resolution	2304×1296
	Night Vision	color night vision
	Input	5V~2A (Max.)
	Waterproof Rating	IP67



The above data are provided by the Baseus Lab; actual use will vary depending on the specific circumstances.

8. Notice

- The device is not a toy.
- Choking Hazard: The product contains (or comes with) small parts, plastic elements, cables and parts that may cause choking hazard. Keep your camera and its accessories out of the reach of small children. Consult a physician immediately if small parts are swallowed.
- Strangulation Hazard: Children get strangled in cords. Keep cords out of the reach of children (more than 3ft/0.9m away).
- The suitable temperature for S0ST00 and accessories is - 20°C to 50°C (Charging temperature is 0°C to 40°C); The suitable temperature for S1UA00 and accessories is - 10°C to 40°C;
- When charging, please place the device in an environment that has a normal room temperature and good ventilation.
- Unless specifically indicated that it is safe to do so in the user guide or instruction manual, do not use this device in an environment that exceeds the recommended low or high temperature.
- Unless specifically indicated that it is safe to do so in the user guide or instruction manual, avoid exposing your device to direct sunshine or excessively wet environments.
- For pluggable equipment, the socket-outlet shall be easily accessible.
- Use only the adapter provided by the manufacturer. Using unauthorized adapters may cause danger and violate the authorized use of the device or the warranty article.

CAUTION: RISK OF EXPLOSION IF BATTERY IS REPLACED BY AN INCORRECT TYPE. DISPOSE OF USED BATTERIES ACCORDING TO THE INSTRUCTIONS.

9.Safety

  This symbol indicates that this product shall not be treated as household waste. Instead, it shall be handed over to the applicable collection point for the recycling of electrical and electronic equipment. Follow local rules and never dispose of the product with normal household waste.

FCC Statement

This device complies with Part 15 of the FCC Rules. Operation is subject to the following two conditions: (1) this device may not cause harmful interference, and (2) this device must accept any interference received, including interference that may cause undesired operation. Any Changes or modifications not expressly approved by the party responsible for compliance could void the user's authority to operate the equipment.

This equipment has been tested and found to comply with the limits for a Class B digital device, pursuant to part 15 of the FCC Rules. These limits are designed to provide reasonable protection against harmful interference in a residential installation.

This equipment generates, uses and can radiate radio frequency energy and, if not installed and used in accordance with the instructions, may cause harmful interference to radio communications. However, there is no guarantee that interference will not occur in a particular installation. If this equipment does cause harmful interference to radio or television reception, which can be determined by turning the equipment off and on, the user is encouraged to try to correct the interference by one or more of the following measures:

- Reorient or relocate the receiving antenna.
- Increase the separation between the equipment and receiver.
- Connect the equipment into an outlet on a circuit different from that to which the receiver is connected.
- Consult the dealer or an experienced radio/TV technician for help.

FCC Radio Frequency Exposure Statement

The device has been evaluated to meet general RF exposure requirement. The device can be used in fixed/mobile exposure condition. The min separation distance is 20cm.

The following importer is the responsible party (for FCC matters only)

Company Name: BASEUS TECHNOLOGY (US) INC

Address: 421 S BROOKHURST ST SUITE 1312

ANAHEIM, CA 92804

Telephone: +6-145412699



This product complies with the radio interference requirements of the European Community.

Declaration of Conformity

Shenzhen Baseus Technology Co., Ltd. Declares that the product is in compliance with Directive 2014/53/eu. The full text of the EU declaration of conformity is available at the following internet address:

<https://eu.baseus.com/pages/euro-compliance>.

RF exposure notice:

The Maximum Permissible Exposure (MPE) level has been calculated based on a distance of $d=20\text{cm}$ between the device and the human body. To maintain compliance with RF exposure requirement, use product that maintain a 20cm distance between the device and human body. Frequency bands and power are as below:

Model	Function	Operation Frequency	Max. RF Power
S0ST00	Wi-Fi	2412-2472MHz	EIRP 18.07dBm
S1UA00	Wi-Fi	2412-2472MHz	EIRP 17.26dBm

10.Customer Service

Warranty	24-month limited warranty
✉	support@baseussecurity.com
☎	United States Tel: +1(800)2208056

For troubleshooting and tutorial videos,
please visit

<https://support.baseus.com>

or scan the QR code below:



Facebook
@Baseus.fans



Instagram
@baseus_global



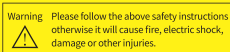
X (Twitter)
@Baseus_Global



YouTube
@Baseusofficial



TikTok
@baseus.us



Manufacturer: Shenzhen Baseus Technology Co., Ltd.
Add: 2nd Floor, Building B, Baseus Intelligence Park, No.2008, Xuegang Rd,
Gangtou Community, Bantian Street, Longgang District, Shenzhen
Hotline: +1 800 220 8056 Website: <https://www.baseus.com>
Official After-sales E-mail Address: support@baseussecurity.com

PB5173Z_P0A1

11xxxxxxxx

Designed by Baseus

Made in China